



DEPARTEMENT DU LOIRET  
VILLE D'ORLEANS

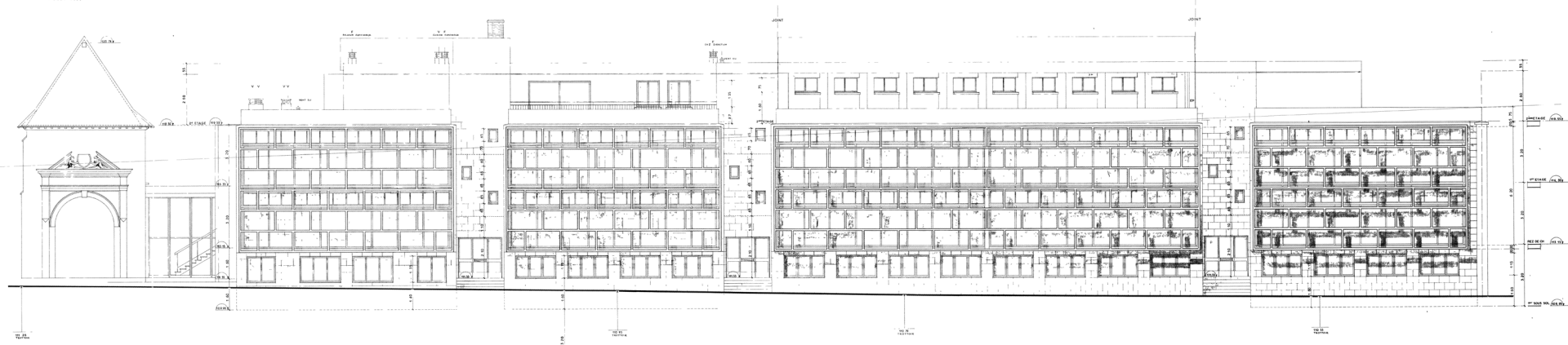
**ECOLE  
DES  
BEAUX ARTS**

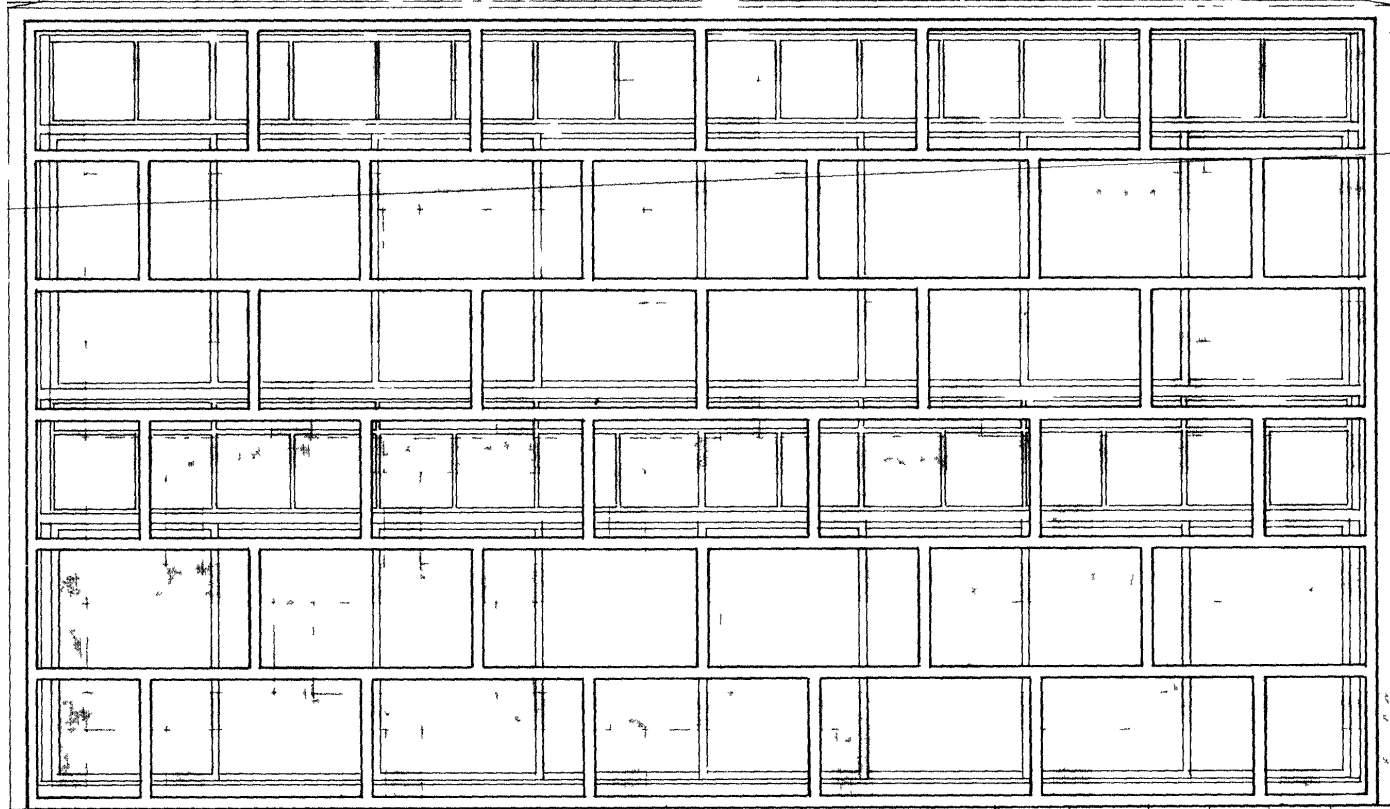
9

FAÇADE SUD  
E.CHELLE 0,00PM

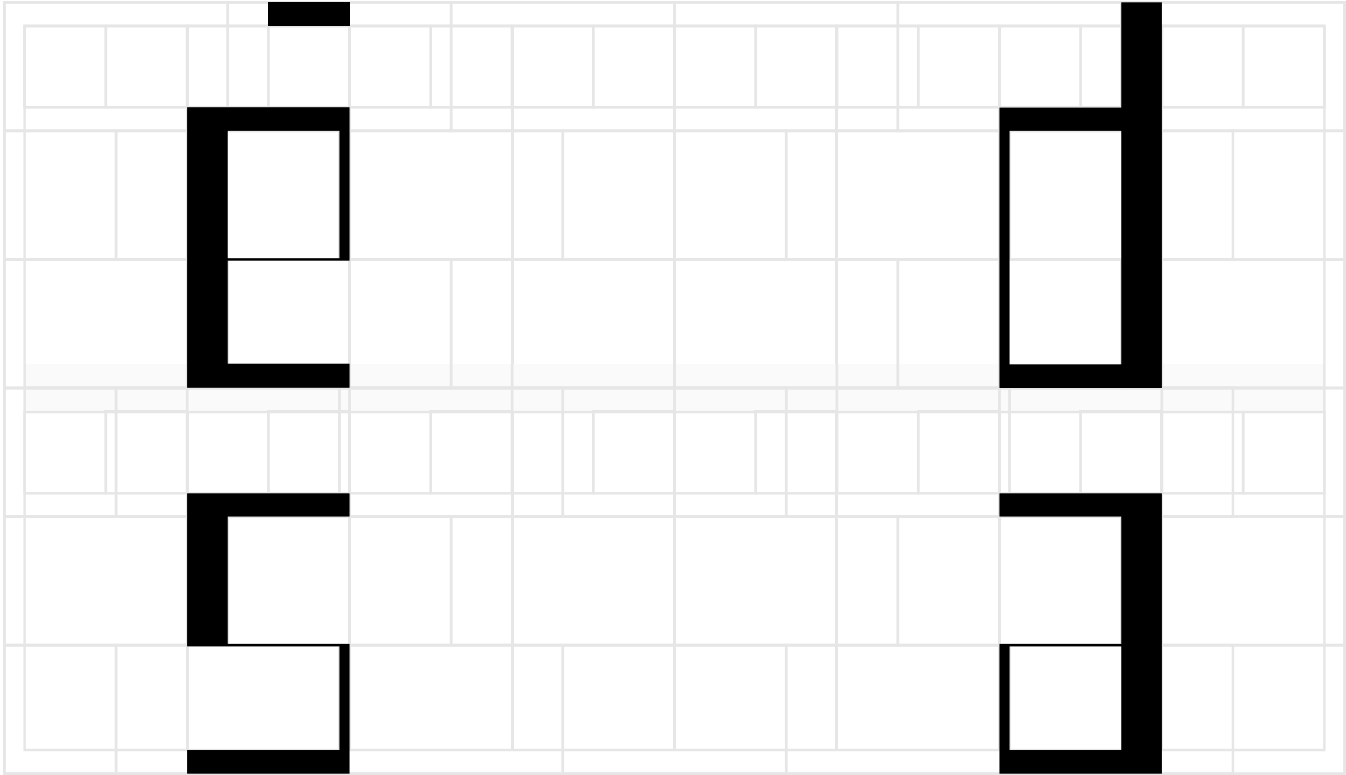
RUE DUPANLOUP

P. LABLAUDE ARCHITECTE-CORRESPONDANT  
C. MARTIN ARCHITECTE D'OPERATION  
JUILLET 1988









abcdefghijklmnop

pqrstuvwxyz

abcdefghijklmnop

pqrstuvwxyz

abcdefghijklmnop

pqrstuvwxyz

abcdefghijklmnop

pqrstuvwxyz